

Ordering Information

Reference No.	Stent Length / Diameter (mm)	Reference No.	Stent Length / Diameter (mm)
FGFX250008	08/2.50	FGFX300024	24/3.00
FGFX275008	08/2.75	FGFX350024	24/3.50
FGFX300008	08/3.00	FGFX250028	28/2.50
FGFX350008	08/3.50	FGFX275028	28/2.75
FGFX250012	12/2.50	FGFX300028	28/3.00
FGFX275012	12/2.75	FGFX350028	28/3.50
FGFX300012	12/3.00	FGFX250032	32/2.50
FGFX350012	12/3.50	FGFX275032	32/2.75
FGFX250016	16/2.50	FGFX300032	32/3.00
FGFX275016	16/2.75	FGFX350032	32/3.50
FGFX300016	16/3.00	FGFX250036	36/2.50
FGFX350016	16/3.50	FGFX275036	36/2.75
FGFX250020	20/2.50	FGFX300036	36/3.00
FGFX275020	20/2.75	FGFX350036	36/3.50
FGFX300020	20/3.00	FGFX250040	40/2.50
FGFX350020	20/3.50	FGFX275040	40/2.75
FGFX250024	24/2.50	FGFX300040	40/3.00
FGFX275024	24/2.75	FGFX350040	40/3.50

Not available for sale in USA

Compliance Chart

Pressure [atm]	2.00 mm	2.25 mm	2.50 mm	2.75 mm	3.00 mm	3.50 mm	4.00 mm	4.50 mm
2	1.91	2.16	2.41	2.61	2.82	3.24	3.74	4.34
4	1.96	2.21	2.46	2.69	2.91	3.38	3.85	4.43
6	2.00	2.25	2.50	2.75	3.00	3.50	3.97	4.50
8	2.04	2.31	2.54	2.83	3.09	3.59	4.07	4.59
10	2.08	2.35	2.57	2.86	3.14	3.67	4.15	4.68
12	2.13	2.39	2.60	2.89	3.18	3.70	4.21	4.76
14	2.17	2.43	2.62	2.91	3.21	3.74	4.27	4.85
16	2.21	2.48	2.64	2.94	3.25	3.78	4.32	4.93
18	2.25	2.52	2.67	2.97	3.28	3.82	4.38	4.99

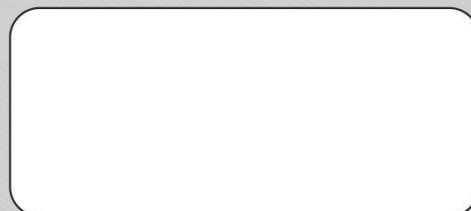
Nominal Pressure (NP)
 Rated Burst Pressure (RBP)

1 atm = 1.01 bar



Sahajanand Medical Technologies Pvt. Ltd.
 "Sahajanand Estate", Wakharia Wadi,
 Near Dabholi Char Rasta,
 Ved Road, Surat 395004, Gujarat, INDIA
 Tel.: +91 261 3060606 Fax: +91 261 3060607
 Email : contact@sahmed.com
 Visit us at : www.smtpl.com
 • CIN: U33119GJ2001PTC040121

Distributed and Marketed by:



Flexinium™
Cobalt Chromium Coronary Stent System



0434

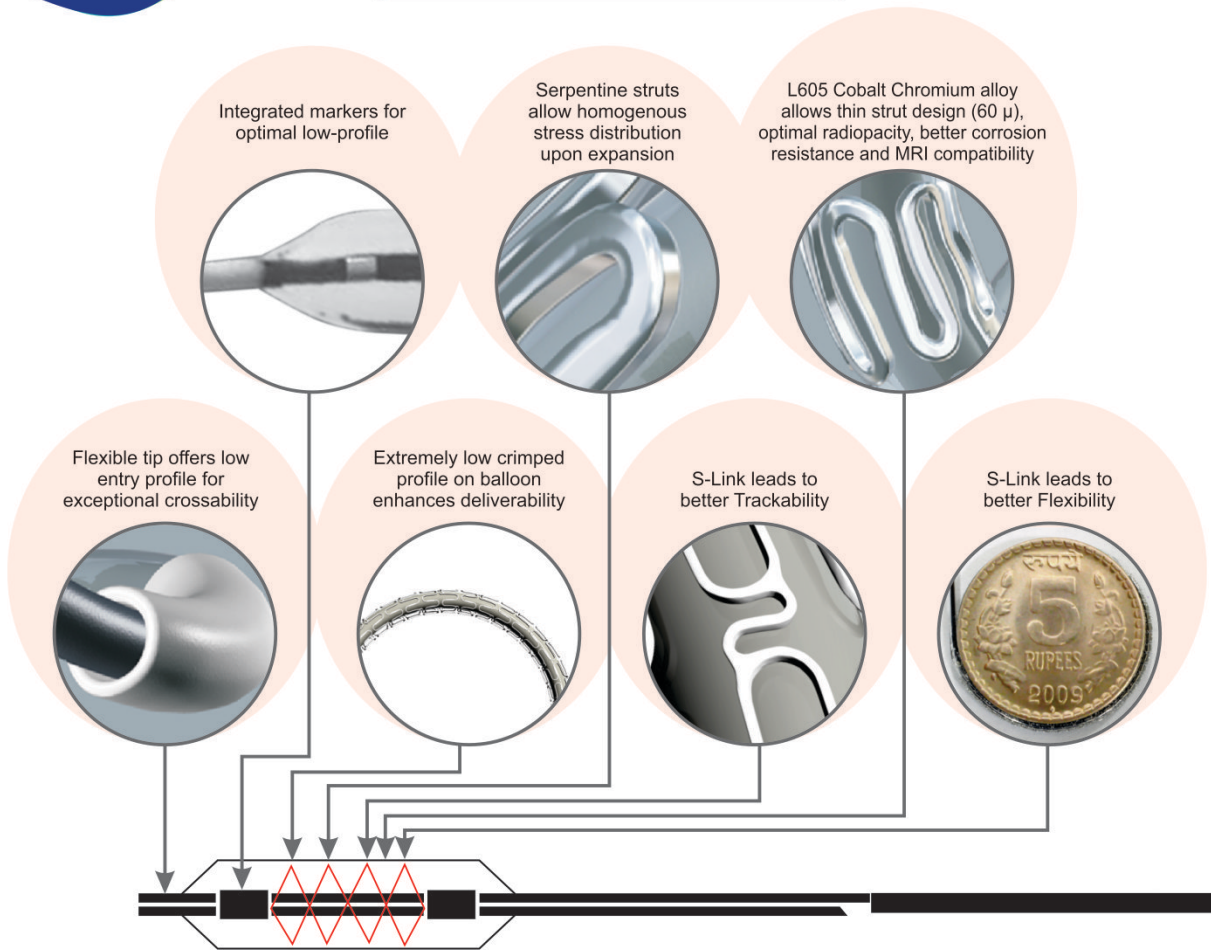


Important Information : Prior to use, refer to the "Instructions for use" supplied with these devices for indications, contraindications, side effects, suggested procedure warnings and precautions. As part of our continuous product development policy we reserve the right to change product specifications without prior notification.

FXBRO/EN02 REV.00. 01MAY2016

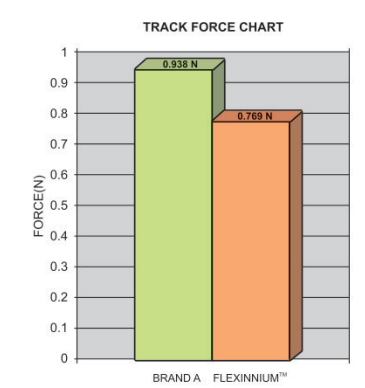


Design Characteristics



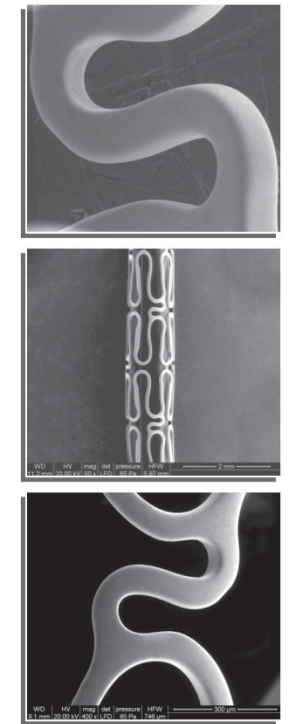
Trackability Chart

As per our proprietary bench test



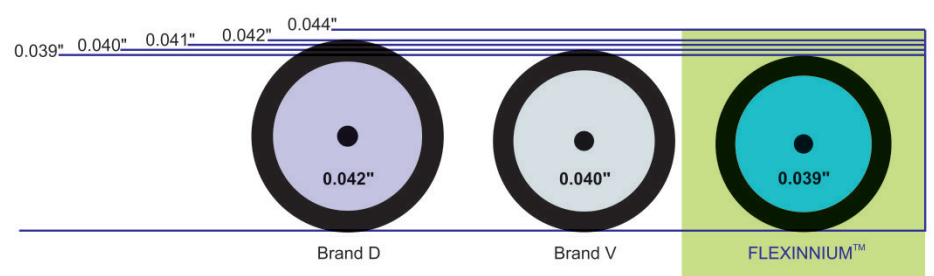
- S-Links in Flexinnium leads to better Trackability
- Better Crossability
- Excellent Pushability
- Low balloon profile enhances Deliverability

SEM Images of Flexinnium™ Cobalt Chromium Coronary Stent System



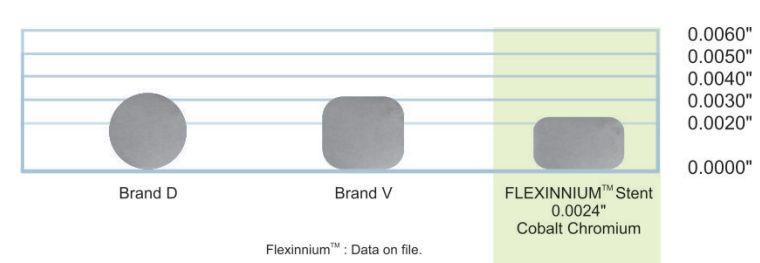
• Scanning Electron Microscopic Images of Flexinnium™ Cobalt Chromium stent showing smooth Inner and outer surface.

Crossing Profile



Flexinnium™ : Data on file.

Strut Thickness



Flexinnium™ : Data on file.

Specifications

Device Component Description	
Available Stent Lengths*	8, 12, 16, 20, 24, 28, 32, 36, 40, 44, 48 mm
Available Stent Diameters*	2.00, 2.25, 2.50, 2.75, 3.00, 3.50, 4.00, 4.50 mm
Stent Material	L605 Co-Cr alloy
Stent Design	Laser cut from seamless tubing in a serpentine pattern
Stent Strut Thickness	0.06 mm (60 μ)
Nominal Stent Foreshortening	< 3 %
Recoil	< 4 %
Delivery System Usable Length	1400 mm (140 cm)
Delivery System Y - Adapter Ports	Single access port to inflation/deflation lumen. A guidewire exit port is located at 25 cm from the tip. Designed for guidewire 0.014 inch.
Catheter Shaft Outer Diameter	Proximal : 0.67mm Distal : 0.89mm
Balloon Inflation Pressure	**NP: 6 atm RBP: 16 atm, RBP: 14 atm (for size Ø4.5 mm)
Guide Catheter	5 F compatible
Guidewire Diameter	0.014 inch

* CE approved for Ø2.50mm to Ø3.50mm with stent lengths 8mm to 40mm
 ** Assure full deployment of the stent Deployment pressures should be based on lesion characteristics.
 Note: 1F is equivalent to 0.33mm. 1 atm = 1.01 bar